



Contract Furniture Manufacturer

## BUFFET & COCKTAIL TABLES



mobile | versatile | durable



# INTERMETAL

NEST

CLUBO

FLOCK

2TIER

## BUFFET & COCKTAIL TABLES

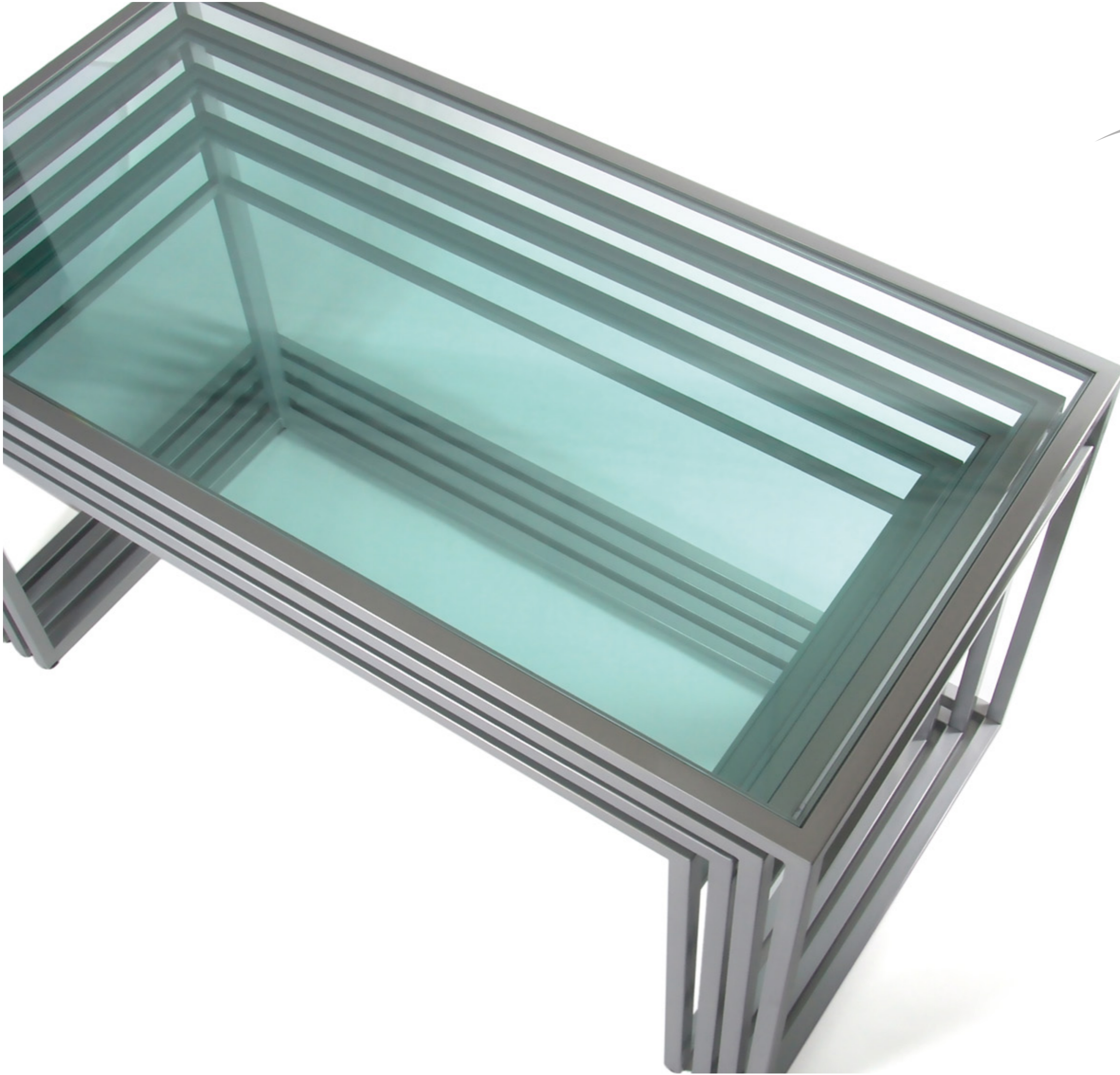
Intermetal designs and manufactures quality furniture for hotels, restaurants, coffee shops, cafés, bistros and fast food outlets. Customers have come to rely on us for their projects as they are assured that they are dealing with a company with many years of experience in the furniture industry. Our manufacturing facility is equipped with CNC bending and routing machines, robotized welding, powder coating and chrome plating lines, upholstery and includes a state-of-the-art joinery for woodworking.

Intermetal offers a series of contemporary and modular buffet table systems that will definitely influence the aesthetics in any room. While each collection has its own distinct features, what remains the same is that each is versatile, durable, easy to maintain and offers customers the flexibility to set up rooms to meet exact customer and event requirements.

Manufactured to stringent quality and commercial standards, the tables are offered in a variety of shapes and sizes and are available in a powder coated, chrome plated or brushed stainless steel finish and clients can select from a range of table tops and modesty panel materials.

A range of buffet tables that gives the F&B Industry the freedom and flexibility to create unique table settings.





## NEST

Versatile, durable and space saving make the NEST Buffet Tables the perfect choice for the F & B industry.

Easy to maintain, the tables are specified as they offer more form and function, are easy to configure and with the option of bridging one table to another, gives endless possibilities for buffet layouts. When not in use, the tables are easily nested and space can be freed up in minutes.



Nesting

Model	Length	Width	Height
<b>SBU 2001 (Full Set)</b>			
SBU 2001A	168	85	90
SBU 2001B	158	80	85
SBU 2001C	148	75	80
SBU 2001D	138	70	75
<b>SBU 2003 (Full Set)</b>			
SBU 2003A	90 Diameter		90
SBU 2003B	70 Diameter		80
SBU 2003C	50 Diameter		70
<b>SBU 2004 (Full Set)</b>			
SBU 2004A	90	90	90
SBU 2004B	80	80	80
SBU 2004C	70	70	70

*SBU 2004 available only in aluminium frame*



Various Shapes & Sizes



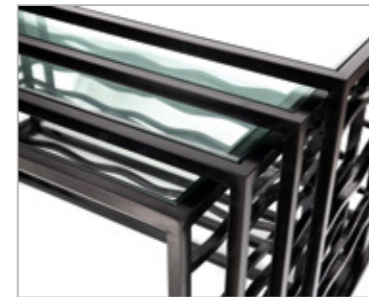
**Table Frame:** 30 x 30 x 1.2mm aluminium/stainless steel square tube  
**Frame Finish:** Powder coated or brushed stainless steel  
**Table Top:** 10mm clear tempered glass

- Features**
- Nesting
  - Space saving
  - Adjustable gliders
  - Castors (optional)



Locking Castors Available  
 \* Add 5cm to table height

\* ALL DIMENSIONS IN CM



Nesting



Wave Design



Locking Castors Available

\* Add 5cm to table height

Model	Length	Width	Height
<b>SBU W2001 (Full Set)</b>			
SBU W2001A	168	85	90
SBU W2001B	158	80	85
SBU W2001C	148	75	80
SBU W2001D	138	70	75

**Table Frame:** 30 x 30 x 1.2mm aluminium square tube

**Frame Finish:** Powder coated

**Table Top:** 10mm clear tempered glass

**Features**

- Nesting
- Space saving
- Adjustable gliders
- Wave design
- Castors (optional)



Various Shapes & Sizes



Bridging Option



Wave Design

Model	Length	Width	Height
<b>BBU W3001 (Full Set)</b>			
BBU W3001A	168	80	90
BBU W3001B	158	80	85
BBU W3001C	80	80	90
BBU W3001D	80	80	85
BBU W3001E	80x40 Half Round		90
BBU W3001F	80x40 Half Round		85
BBU W3001G	115 Diameter		90
BBU W3001H	115 Diameter		85
BBU W3001I	70 Diameter		105
BBU W3001J	70	70	105



BBU W3001 Glass Storage/Transport Trolley (for Bridging Glass Only)

**Table Frame:** 30 x 30 x 1.2mm aluminium square tube  
**Frame Finish:** Powder coated  
**Table Top:** 10mm clear tempered glass

**Features**

- Bridging option
- Various heights available
- Adjustable gliders
- Wave design
- Glass storage/transport trolley



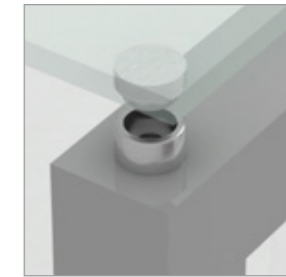
SBU 2002



Optional Front & Side Panels



Nesting



Stainless Steel Flange



Locking Castors



Model	Length	Width	Height
<b>SBU 2002 (Full Set)</b>			
SBU 2002A	196	80	90
SBU 2002B	180	80	81
SBU 2002C	80	80	72

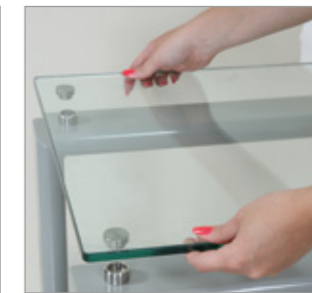
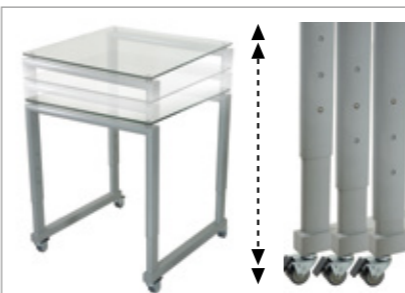
**Table Frame:** 50 x 50 x 3mm aluminium square tube

**Frame Finish:** Powder coated or brushed stainless steel

**Table Top:** 10mm clear or sandblasted tempered glass with polished edge

**Features**

- Stainless steel flange secures glass in place
- Optional front & side panels (Glass or Corian)
- Nesting
- Space saving
- Mobile



Model	Length	Width	Height
<b>SBU 2006 (Full Set)</b>			
SBU 2006A	196	80	90 / 98 / 106
SBU 2006B	180	80	82 / 90 / 98
SBU 2006C	80	80	74 / 82 / 90

**Table Frame:** 35 x 82 x 2mm (outer), 25 x 75 x 2mm (inner) mild steel semi oval shape tube  
50 x 50 x 2mm mild steel square tube

**Frame Finish:** Powder coated

**Table Top:** 10mm clear tempered glass with polished edge

**Features**

- Height adjustable
- Stainless steel flange secures glass in place
- Nesting
- Space saving
- Removable glass top
- Mobile
- Heavy duty castors





**C**UBO

Impress your guests with CUBO, a range of folding buffet tables that are available in a range of shapes and sizes. Room set ups are easy as the tables unfold into position and are just as quick to store using Intermetal's mobile table trolley that transports the folded tables and glass tops safely.

Manufactured in aluminium or steel, quality and durability is guaranteed. A range of buffet tables that will definitely add a sense of style, form and functionality to any room layout.



Modesty Panels



Granite Top



Induction Plate



Foldable

Model	Length	Width	Height
<b>IFC 850IP</b>	180	90	80

**Table Frame:** 30 x 30 x 1.2mm mild steel tube  
**Frame Finish:** Powder coated  
**Table Top:** 20mm granite top  
**Top Frame:** 50 x 25 x 1.2mm mild steel tube

**Features**

- Induction plates available
- Optional modesty panels with storage units
- Removable modesty panels
- Foldable
- Space saving



Triple Induction



IFC 844 Storage/Transport Trolley



Safely Stores Frames & Glass



Flat Folding

Model	Length	Width	Height
<b>IFC 844</b>			
IFC 844A	70 Diameter		105
IFC 844B	70	70	105

**Table Frame:** 30 x 30 x 1.2mm steel square tube

**Frame Finish:** Powder coated, chrome plated or brushed stainless steel

**Table Top:** 10mm clear tempered glass with polished edge

**Features**

- Foldable
- Adjustable gliders
- Storage/Transport trolley capacity: 10 Units = 10 frames & 20 glass tops (10 top +10 bottom)
- Stainless steel flange secures glass in place
- Rubber levelling rings



Various Shapes & Sizes



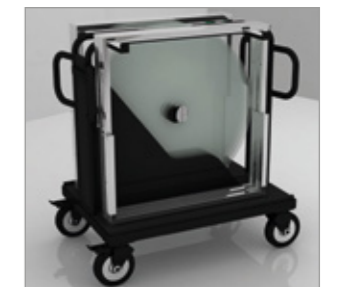
Stainless Steel Flange



Round Glass



Square Glass



IFBU 847  
Storage/Transport Trolley

Model	Length	Width	Height
<b>IFBU 847</b>			
IFBU 847A	90 Diameter		75/90/105/120
IFBU 847B	90	90	75/90/105/120
IFBU 847C	110 Diameter		75/90/105/120

**Table Frame:** 30 x 30 x 1.2 mm steel square tube

**Frame Finish:** Powder coated, chrome plated or brushed stainless steel

**Table Top:** 10mm clear tempered glass with polished edge

**Features**

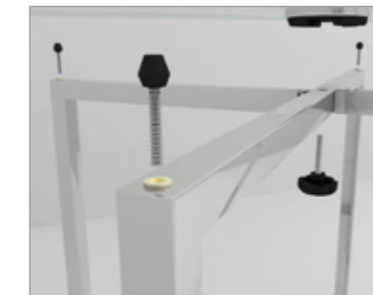
- Foldable
- Adjustable gliders
- Storage/Transport trolley capacity: 4 Units = 4 frames & 4 glass tops
- Stainless steel flange secures glass in place
- Rubber levelling rings



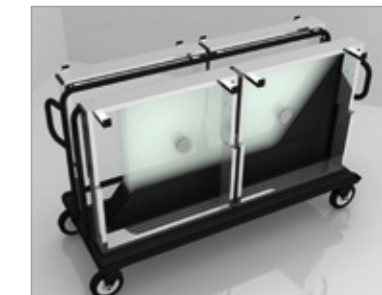
IFBU 849



Stainless Steel Flange



Rubber Levelling Rings



IFBU 849 Storage/Transport Trolley

Model	Length	Width	Height
<b>IFBU 849</b>			
IFBU 849A	180	90	75/90/105/120
IFBU 849B	180	70	75/90/105/120

**Table Frame:** 30 x 30 x 1.2mm steel square tube

**Frame Finish:** Powder coated, chrome plated or brushed stainless steel

**Table Top:** 10mm clear tempered glass with polished edge

**Features**

- Foldable
- Adjustable gliders
- Storage/Transport trolley capacity: 4 Units = 8 frames & 4 glass tops
- Stainless steel flange secures glass in place
- Rubber levelling rings





Frame Secures to Base



Wave Design



Foldable



IFC 850  
Storage/Transport Trolley

Model	Length	Width	Height
<b>IFC 850 (Full Set)</b>			
IFC 850A	180	90	75 / 90 / 105
IFC 850B	180	70	75 / 90 / 105
IFC 850C	90	90	75 / 90 / 105
IFC 850D	70	70	75 / 90 / 105
IFC 850E	70 Diameter		105

**Table Frame:** 30 x 30 x 1.2mm steel square tube

**Frame Finish:** Powder coated or brushed stainless steel

**Table Top:** 30 x 30mm steel or stainless steel tube with 10mm clear tempered glass/compact laminate

**Features**

- Foldable
- Adjustable gliders
- Storage/Transport trolley capacity: 4 Units = 4 frames & 4 glass tops
- Optional wave design



Folding



Stainless Steel Flange



IFC 851 Storage/Transport Trolley

Model	Length	Width	Height
IFC 851	150	75	85
	100	50	26
	60	30	20

**Table Frame:** 30 x 30 x 1.2mm steel square tube  
**Frame Finish:** Powder coated or brushed stainless steel  
**Table Top:** 10mm clear tempered glass with polished edge

- Features**
- Foldable
  - Adjustable gliders
  - Storage/Transport trolley capacity: 2 Units = 2 frames + 6 glass tops
  - Stainless steel flange secures glass in place



Slim Fold



Mobile



Safety Locks



Heavy Duty Locking Castors

Model	Length	Width	Height
<b>IDCT2</b>	183	90	75 / 104
<b>Folded</b>	38	90	196

**Table Frame:** 30 x 30 x 1.2mm steel square tube

**Frame Finish:** Powder coated

**Table Top:** 25mm laminated MDF

**Features**

- Two-Tier provides extra table space
- Folds and unfolds quickly
- One person can handle
- Easy to move/mobile
- Slim fold reduces storage space

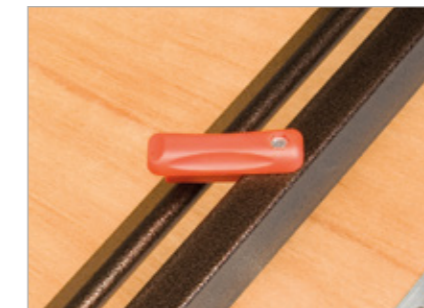




Flock Top



Flat Folding Mechanism



Locking Lever



Powder Coated Frame  
Leg Cap Available in Metal or Plastic



Cocktail Table (IFC 840)

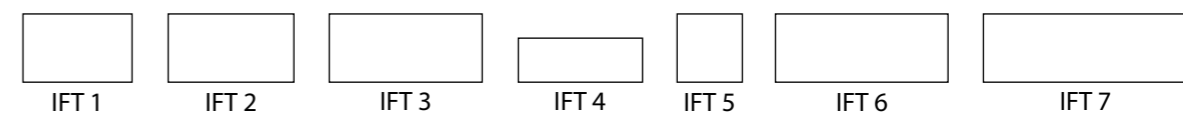


2 Tier Buffet Table

Model	Length	Width	Height
IFT 1 / HD 6	122	76	75
IFT 2 / HD 7	152	76	75
IFT 3 / HD 8	183	76	75
IFT 4 / HD 9	183	45	75
IFT 5 / HD 5	76	76	75
IFT 6 / HD 20	210	76	75
IFT 7 / HD 21	240	76	75



Transport Trolley



**Table Frame:** 30 x 30mm x 1.2mm steel square tube  
**Frame Finish:** Powder coated  
**Table Top:** Flock

- Features**
- Nylon flock top reduces noise and cloth slippage
  - Aluminium protective edging
  - Powder coated frame
  - Reinforced easy to handle locking lever



Model	Length	Width	Height
<b>ES 1001 (Full Set)</b>			
ES 1001A	15	15	5.5 / 11
ES 1001B	22.5	22.5	5.5 / 11 / 16.5 / 22
ES 1001C	30	30	5.5 / 11 / 16.5 / 22 / 27.5 / 33

**Stand Frame:** 19mm round steel tube

**Frame Finish:** Powder coated/Stainless steel

**Top:** 8mm clear tempered glass with polished edge

